

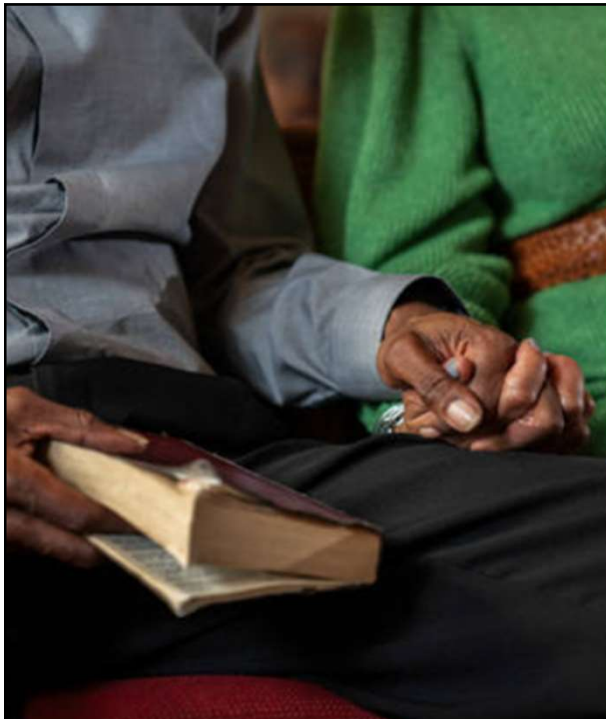


The Role of the Black Church: Meeting the Needs of Families Affected by Dementia



Fayron Epps, PhD, RN, FGSA, FAAN
 Founder, AlterDementia
 Professor | Karen and Ronald Herrmann Endowed Chair of Caregiving Research
 UT Health San Antonio School of Nursing

1

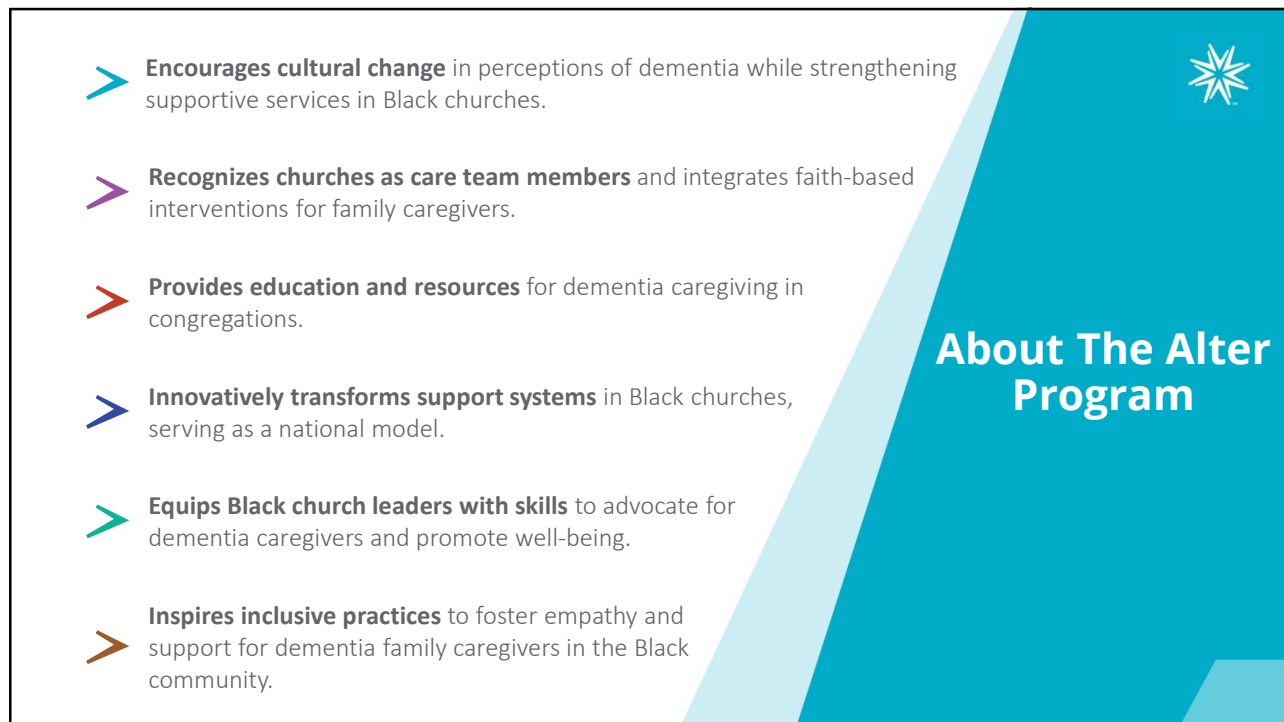


Overview:

The Alter Program provides dementia-related **education** to African American faith-based communities and **equips** them with the resources they need to **better serve** their members and surrounding community who have been impacted by dementia.

The Alter Program aims to **promote positive perceptions** of aging by **empowering Black communities** to **support older adults and caregivers** affected by dementia, fostering resilience, and **enhancing overall well-being**.

2



- **Encourages cultural change** in perceptions of dementia while strengthening supportive services in Black churches.
- **Recognizes churches as care team members** and integrates faith-based interventions for family caregivers.
- **Provides education and resources** for dementia caregiving in congregations.
- **Innovatively transforms support systems** in Black churches, serving as a national model.
- **Equips Black church leaders with skills** to advocate for dementia caregivers and promote well-being.
- **Inspires inclusive practices** to foster empathy and support for dementia family caregivers in the Black community.

About The Alter Program

3

Program Significance

Addresses critical issues:


- Highlights caregiving disparities in dementia within Black communities.

Seeks solutions through partnerships:

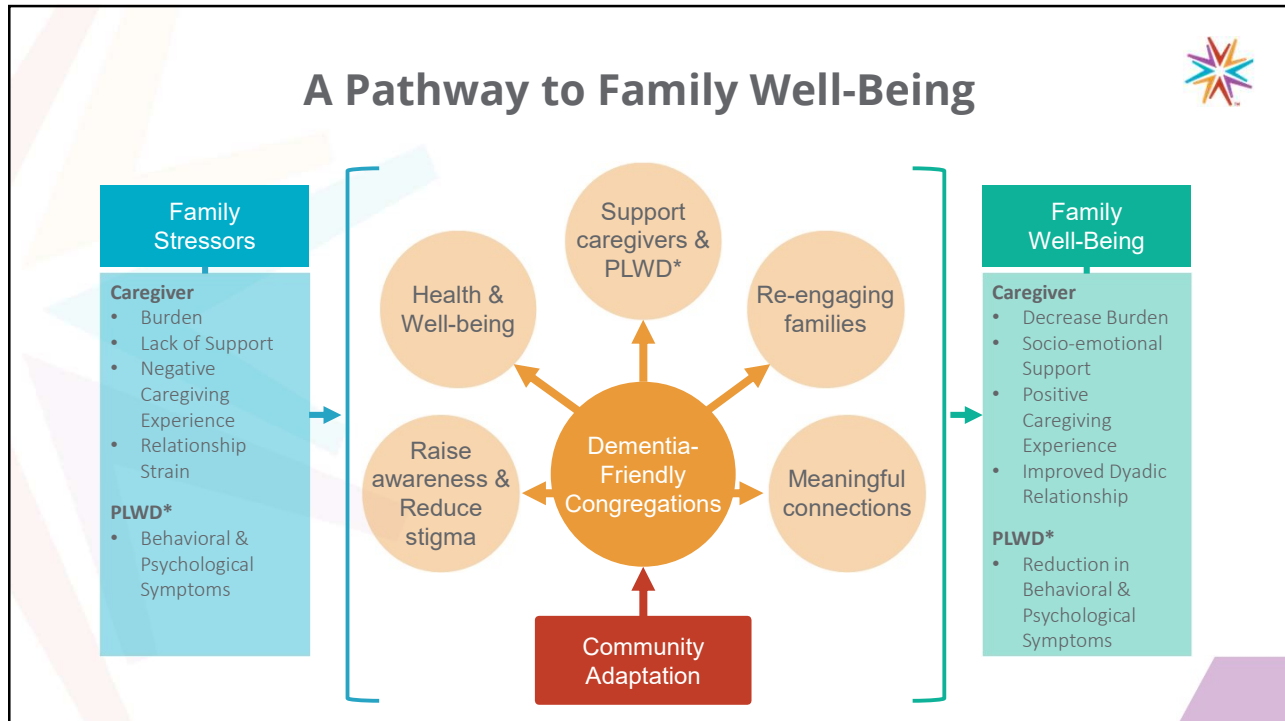
- Seeks to bridge these gaps by leveraging the trusted role of faith communities to implement the Alter program.

Provides needed resources and supports:

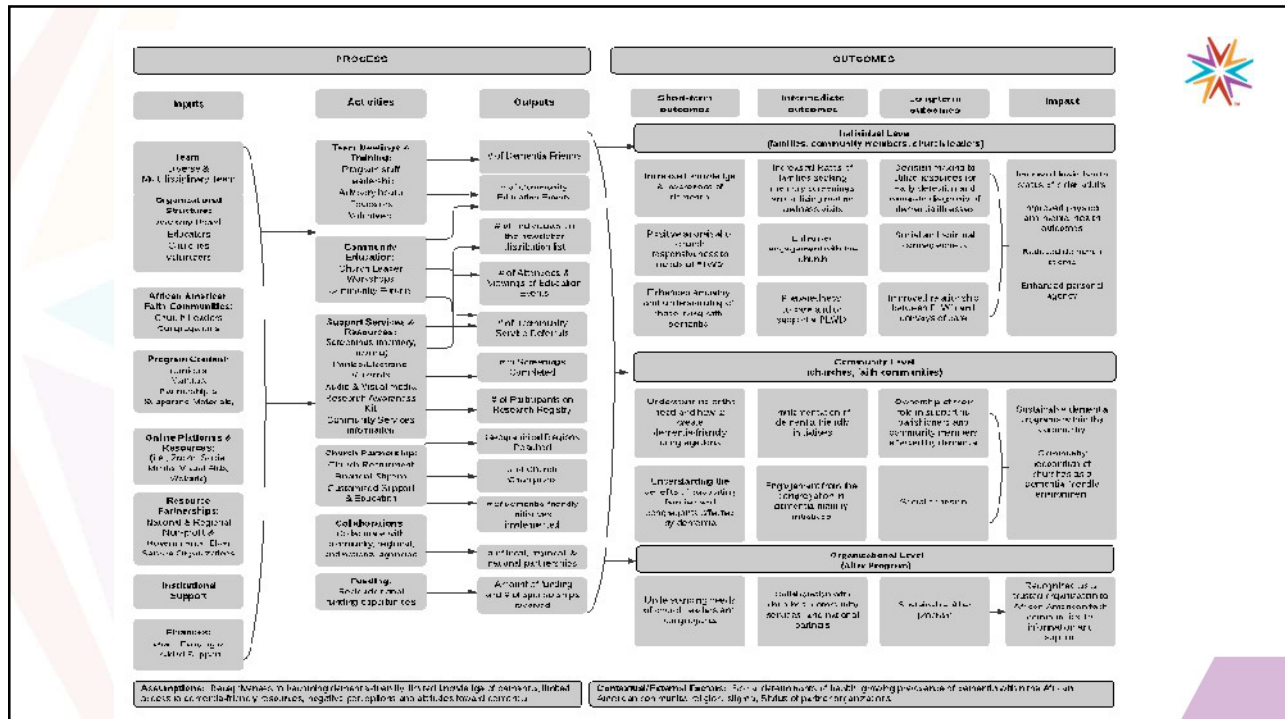
- Urgently addresses the escalating impact of dementia in Black communities and the pressing need for culturally responsive programs and support networks to address disparities.



4



5



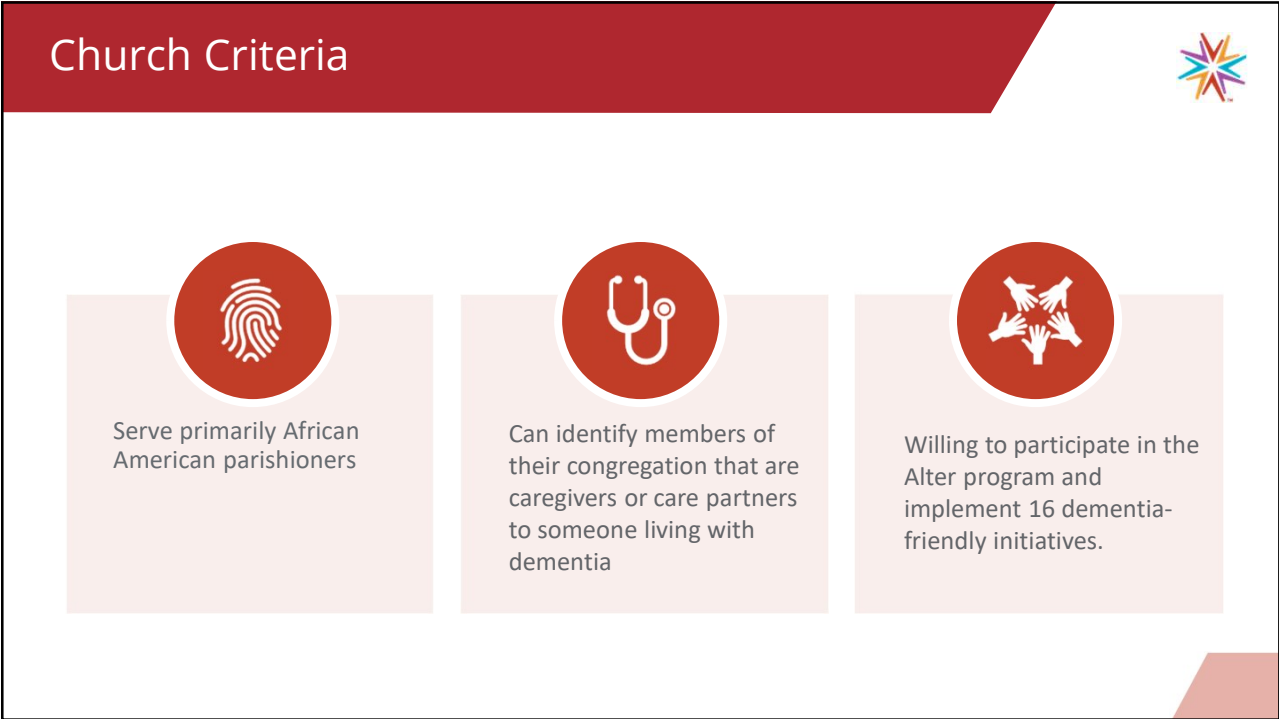
6



Partnership Details

- 2-year partnership
- Welcome box
- Memorandum of Understanding
- Financial contribution/Monetary support
- Agree to implement 16 suggested initiatives
- Opportunity to renew partnership/legacy partners

7



Church Criteria

- Serve primarily African American parishioners
- Can identify members of their congregation that are caregivers or care partners to someone living with dementia
- Willing to participate in the Alter program and implement 16 dementia-friendly initiatives.

8



The Alter program is working toward bringing resources and supportive services African American communities through an evidence-informed three-pronged approach:

SUPPORT



Offering resources for care partners and persons living with dementia

EDUCATION



Providing or promoting church and community education and awareness opportunities

WORSHIP



Modifying faith communities to be dementia-inclusive spaces, physically and programmatically

9



Examples of Initiatives:

SUPPORT



| | |
|------------------|--------------------------------|
| Memory Café | Respite Programs |
| Support Groups | Supportive education/trainings |
| Resource Library | Supply Closet for families |

EDUCATION



Memory/Purple Sunday
Virtual Dementia Experience
Dementia or Brain Health Education (to include youth)


WORSHIP




Shorten service length
Offer a high proportion of music
Familiar prayers & use of visual aids

10

Where are we?



- 105 faith communities
- 21 states
- 56 cities
- 14 faith denominations



11

OUR RESEARCH

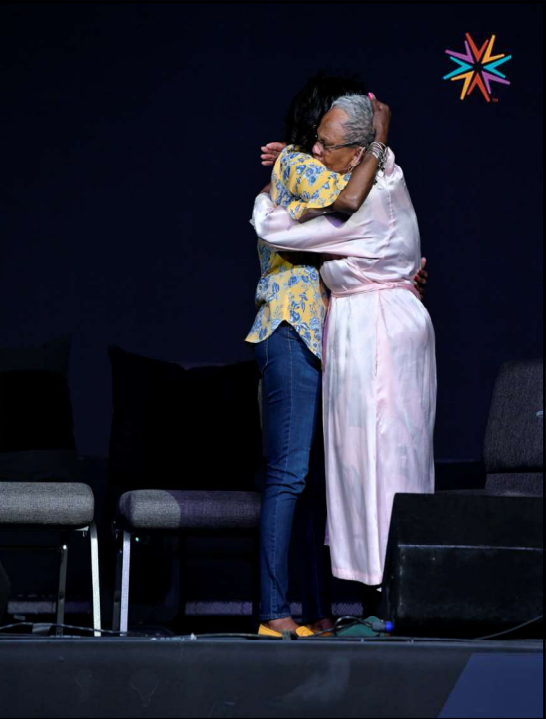


CREATING A MEASURE OF COMMUNITY-LEVEL
DEMENTIA-FRIENDLINESS
IN FAITH COMMUNITIES

12

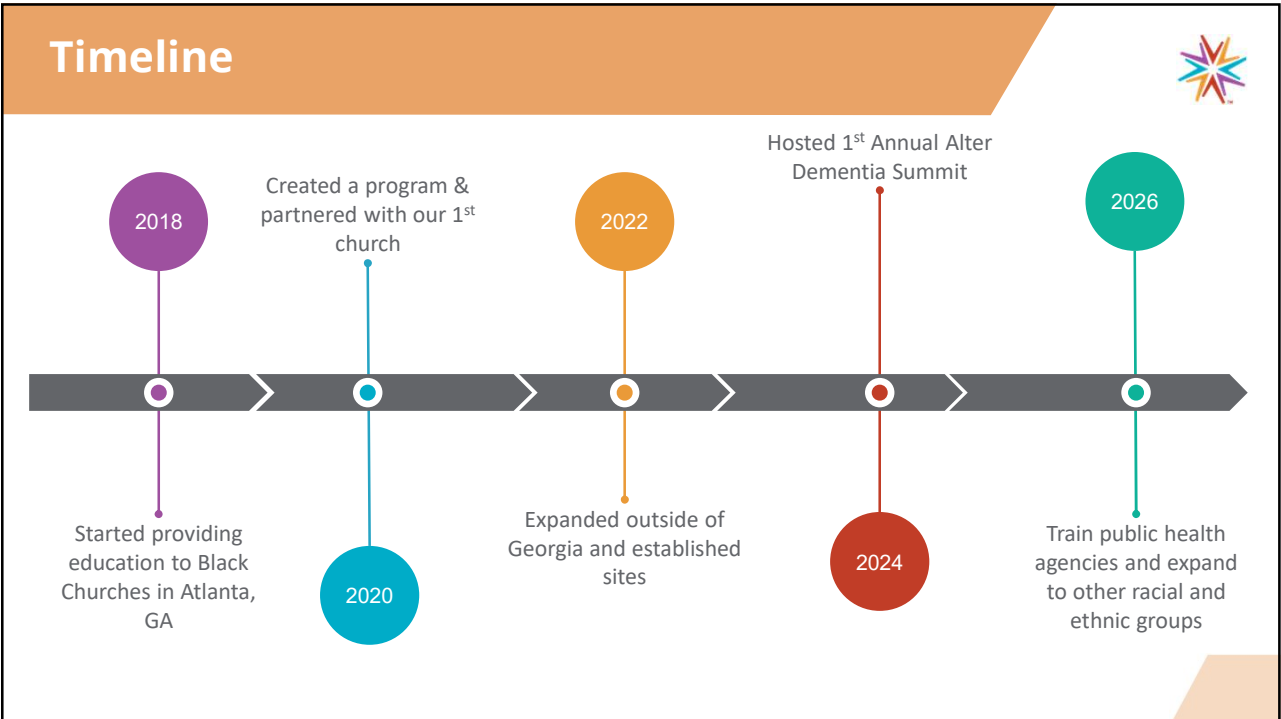
Expected Outcomes

- Increased awareness and understanding of dementia within Black faith communities.
- Establishment of supportive infrastructure to facilitate dementia-friendly initiatives
- Enhanced capacity of Black faith communities to support dementia caregivers



13

Timeline



- 2018**: Started providing education to Black Churches in Atlanta, GA
- 2020**: Created a program & partnered with our 1st church
- 2022**: Expanded outside of Georgia and established sites
- 2024**: Hosted 1st Annual Alter Dementia Summit
- 2026**: Train public health agencies and expand to other racial and ethnic groups

14

Next Steps

Collaborate & Scale



Collaborate with public health agencies to disseminate the Alter program.

Awareness & Outreach



Continue to raise dementia awareness in the Black community through partnership with faith communities.

Translate



Go beyond the Black community and translate the program to other faith communities that serve diverse racial and ethnic groups.



15

Sustainability



The plan for **continued support** includes **establishing a formal coordinating center** to assist public health service agencies across the United States, **leveraging the support of PHCOE-DC** as part of the BOLD Infrastructure for Alzheimer's Reauthorization Act.

To **ensure sustainability**, **sponsorship will be solicited**, and a **licensing fee will be developed**. Efforts will also focus on **expanding the program's availability through reliable channels** capable of providing appropriate supervision for disseminating the Alter Program.

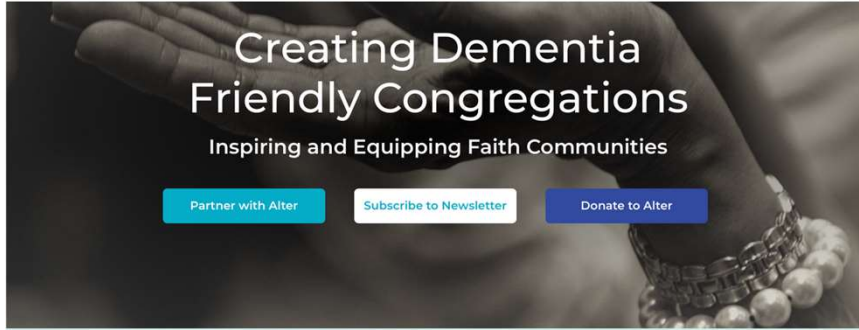
16

alterdementia.com



Home About Alter Resources Contact

Partner with Alter



Partner with Alter

Subscribe to Newsletter

Donate to Alter



17



ALTER™
Dementia Summit
 www.alterdementia.com
SAVE THE DATE
April 10-12, 2025
 Impact Church
 2323 Sylvan Road
 East Point, GA 30344



18

Acknowledgments



- Alter Team
- SageNavigator, Inc
- Georgia GEAR (GWEP, HRSA)
- NorthStar GWEP*
- University of Minnesota
- BOLD Public Center of Excellence on Dementia Caregiving
- University of Pittsburgh*
- Virginia Geriatric Education Center*
- Emory University
- Respite for All Foundation
- Engaging Communities (University of TN Chattanooga)
- UsAgainstAlzheimer's
- Alzheimer's Association
- Parkinson's Foundation
- AARP
- Rupe Foundation
- Georgia Department of Public Health
- Mississippi State Department of Health*
- MapHabit
- UT Health San Antonio
- Michigan Department of Health and Human Services

19



THANK YOU!



ALTERTM
INSPIRING AND EQUIPPING FAITH COMMUNITIES

EMAIL: epssf@uthscsa.edu
outreach@alterdementia.com
 Cell: 770-686-7730
 X: @ALTERDEMENTIA
 IG @Alterdementia

20