



## Addressing the Needs of LGBTQIA+ Populations in Alzheimer's Care: Insights and Future

Advisory Council for Alzheimer's Research, Care and Services Long-term Services and Supports Subcommittee Winter Meeting – January 13, 2025



**Sandra Rivas**  
(she/her/ella)  
Director of Senior Programs & Ops,  
On Lok Day Services  
[srivas@onlok.org](mailto:srivas@onlok.org)



**Jessica Eng, MD, MS**  
(she/her)  
Medical Director,  
On Lok PACE  
[jessica.eng@onlok.org](mailto:jessica.eng@onlok.org)

0



## Disclosures

Sandra Rivas and Jessica Eng, have no disclosures to report

1

1

1

## Introduction to On Lok: Access to Healthcare, Community & Advocacy

On Lok was founded in 1971 and is the founder of Program of All-Inclusive care for the Elderly (PACE)

Fifty years ago, Marie-Louise Ansak and Dr. William Gee co-founded On Lok on the principles that accessible health care, supportive services, and housing were necessary for the frail elderly to avoid unnecessary institutionalization. Today, we continue to carry forward their mission, with innovative programs and policy advocacy to help all seniors stay healthy, active, and connected to their community.”

– Grace Li, CEO



*We believe that every individual is empowered to age with dignity and independence. Our mission is to relentlessly pursue quality of life and quality of care for older adults and their families.*

## On Lok Programs –Continuum of Care



30th Street Senior Center



SAN FRANCISCO HUMAN SERVICES AGENCY



Enhanced Care Management



CaAIM



SAN FRANCISCO HEALTH PLAN



Here for you



Medically Tailored Meals

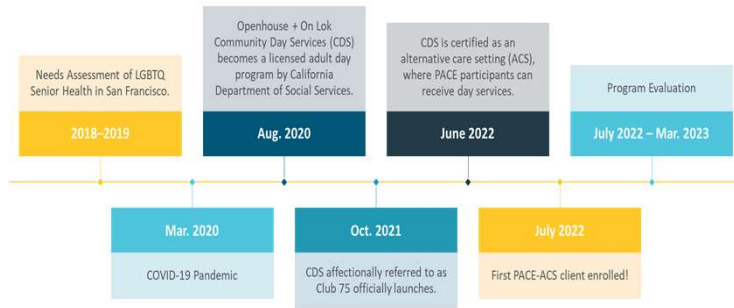
openhoused + ON LOK



Community Day Services

## Partnership & Co-Design with Openhouse

On Lok & Openhouse SF partner to co-design an affirming adult day program with and for LGBTQ+ older adults



CDS is operated by On Lok at Openhouse 75 Laguna St. campus

community, services, and housing for LGBTQ+ seniors  
**openhouse**



*Building Community by Centering the Voices and Experiences of LGBTQ+ Older Adults. Openhouse empowers San Francisco Bay Area LGBTQ+ older adults to overcome the unique challenges they face as they age by providing housing, direct services, and community programs.*

## Needs Assessment and Key Recommendations

- A “one-stop shop” program with case management, better linkage to healthcare, LGBTQ+-identifying staff, and use of trauma-informed care approaches.
- Should provide inclusive services & design social programs based on the interests and cultural backgrounds of diverse LGBTQ+ seniors.
- The program should be convenient, affordable (i.e., sliding scale), and customized to the holistic needs of LGBTQ+ seniors living in San Francisco.

### Key Recommendations for LGBTQ+ Inclusive Adult Day Services Program

Culturally-tailored programs

Specialized & targeted services

Supportive programs for caregivers

Convenient & financially accessible

## Community Day Services Continuum of Care



6

6



## Eligibility Cost & Location

### Eligibility

- 55 or older
- Can benefit from assistance with daily activities
- Can benefit from a supportive affirming environment
- Needs assistance with personal care

### Cost:

- Participation fees are on a sliding scale, financial assistance is available
- Health plans or Long-term care insurance that offer Adult Day Program benefit accepted

### Location

- Club 75 is one of many offerings available at the new Openhouse Community Center at 75 Laguna St.

7

7

**YOUR PERSONAL HEALTH CARE TEAM**

**Participant & Family**

## What is PACE?

### Program of All-Inclusive Care for the Elderly

- Comprehensive, person-centered care to support individuals eligible for nursing home care to remain in their homes and communities
- Care coordination by interdisciplinary team that delivers and manages care across settings
- Focus on prevention, health & wellness
- Full risk capitation payment model for all needed services
- Provider-based managed care that is a choice in CalAIM (California Advancing and Innovating Medi-Cal)

8
17

8

## How does PACE work?

Interdisciplinary teams assess need, deliver and manage care across settings.

9

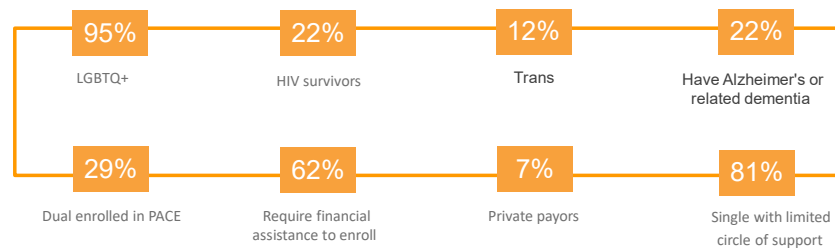
9

## PACE Provides High-Quality Outcomes

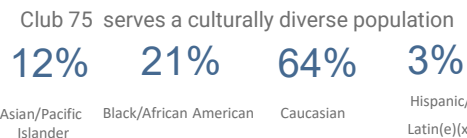
- 1 Care Team:**  
 All PACE participants have an interdisciplinary team, including a primary care provider, who provides services and care coordination.
- 2 Better Preventative Care\*:**  
 PACE participants receive better preventive care, specifically with respect to hearing and vision screenings, flu shots and pneumococcal vaccines.
- 3 Reduced Hospital Admissions:\*\***  
 PACE participants have a 24% lower hospitalization rate than dually-eligible beneficiaries who receive Medicaid nursing home services.
- 4 High Rates of Community Residence\*\*\*:**  
 95% of PACE participants live in the community instead of a nursing home.
- 5 High Caregiver Satisfaction\*\*\*\*:**  
 96% of family members are satisfied with PACE support, 97.5% would recommend PACE.

\*Leavitt, M., U.S. Department of Health and Human Services, Interim Report on the Quality and Cost of the Program of All-Inclusive Care for the Elderly, 2009, Mathematica Policy Research evaluation prepared for the Secretary of Health and Human Services for submission to Congress.  
 \*\*Segelman, M., Szydowski, J., Kinoshian, B., et al. (2014). Hospitalizations in the Program of All-Inclusive Care for the Elderly. Journal of the American Geriatrics Society, 62: 320-24.  
 \*\*\*<https://www.npaonline.org/sites/default/files/images/NPA%20Infographic%203%2020%20%281%29.pdf>, 7/30/2020  
 \*\*\*\*National PACE Association. (2018). PACE Reduces Burden of Family Caregivers, Aug. 30.

## “Club 75” Member Profile



We have served 28 unduplicated clients in FY24



\* As of June 2024

## Recommendations

- **Expand PACE LGBTQ+ Adult Day Programs:** Enhance the Program of All-Inclusive Care for the Elderly (PACE) to deliver comprehensive, culturally affirming care for LGBTQ+ seniors, enabling them to stay in their communities with appropriate support in activities, nutrition, transportation, and caregiver respite.
- **Support Community-Based Programs and Partnerships:** Foster collaborations like the one between On Lok and Openhouse SF to create specialized adult day programs for LGBTQ+ seniors. Conduct needs assessments and to tailor programs to the specific health challenges of this demographic and evaluation.
- **Implement Culturally Tailored Programs:** Design inclusive services and social programs that reflect the diverse cultural backgrounds and interests of LGBTQ+ seniors, ensuring that care resonates with their identities and needs.
- **Ensure Financial Accessibility:** Maintain affordability through sliding scale fees and financial aid, making programs accessible to LGBTQ+ seniors across various economic backgrounds.

12

12

## Contact

For more information, contact:

Call: [415-292-8302](tel:415-292-8302)

Email: [communitydayservices@onlok.org](mailto:communitydayservices@onlok.org)

Online: <https://www.onlok.org/lgbtq-senior-ca>



13

13

## Acknowledgements

Grace Li (she, her), MHA, CEO, On Lok

Nicole Torres (she/her), RN, COO, On Lok

Vinny Eng (he/him), Executive Director, Openhouse SF

Dani Soto (they, them), Ph.D., Deputy Director, Openhouse SF

Jarmin Yeh, (she,her), Ph.D. Associate Professor, Institute for Health & Aging, Department of Social & Behavioral Sciences, Institute for Health Policy Studies and Bioethics, University of California, San Francisco

Jason Flatt, (he/they) Ph.D., Assistant Professor, School of Public Health Department of Social & Behavioral Health, University of Nevada, Las Vegas

Ephraim Getahun, (they, them), Health Equity Training Consultant